



**WORLD SQUASH OFFICIATING**

UPDATE 2022 – WSF CONFERENCE

**PRESENTATION AIM:**

To provide a deeper understanding of WSO:

- Where we have been – **phase 1**
- Where we are – current
- Where we are heading – **phase 2**

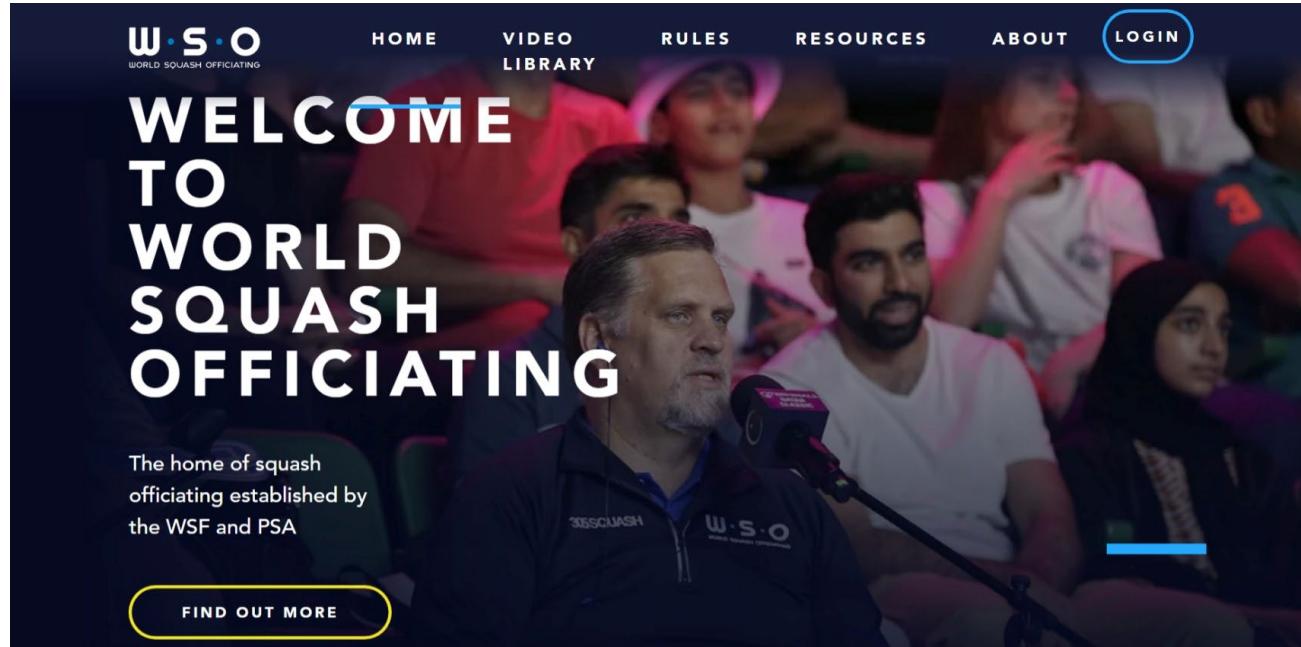


**AIMS:**

- To **professionalise** squash officiating worldwide
- To **standardise** squash officiating worldwide
- To improve the **personal squash experience** at every level through an understanding of the rules

**HOW:**

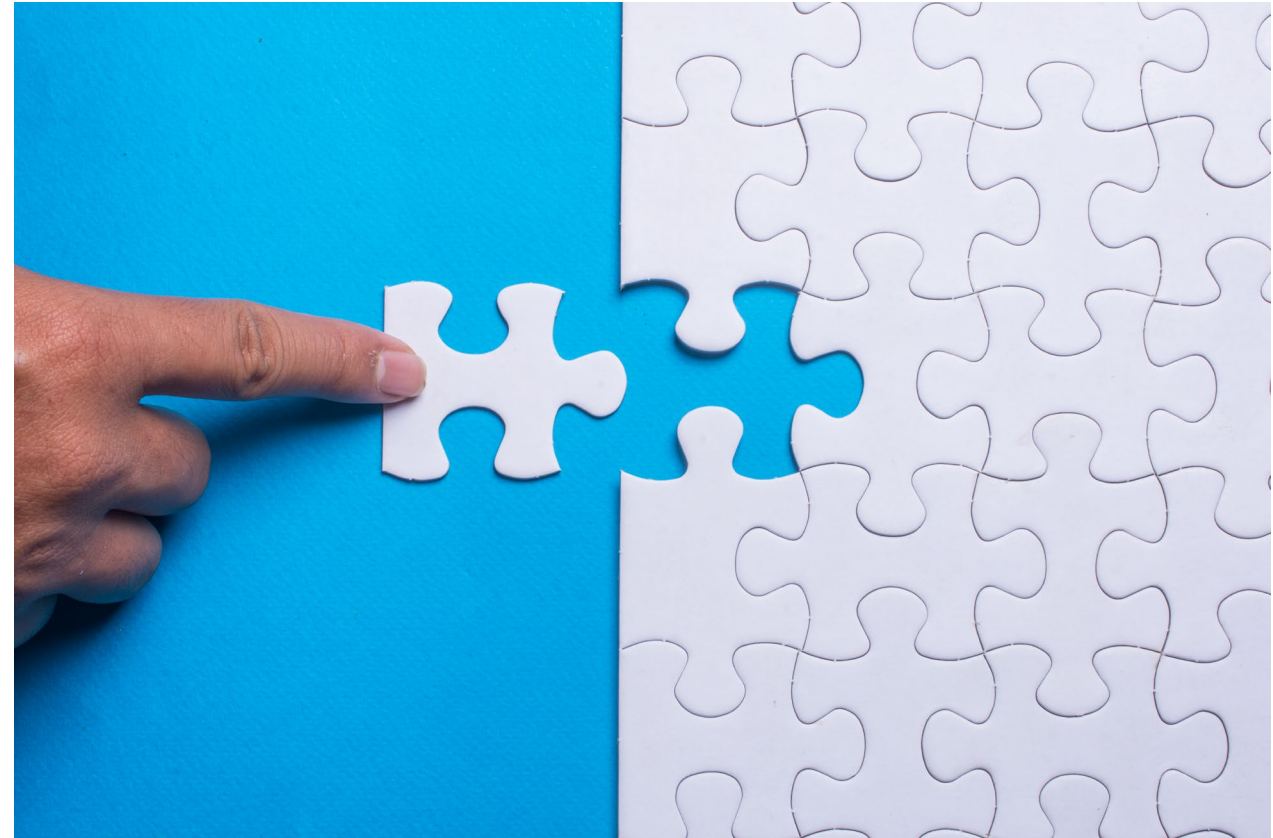
- By increasing **remuneration** for officiating
- By creating **readily available high quality** courses, current content, and training materials
- By **introducing** more stakeholders to the rules earlier through specific content



CURRENT CONTENT	IN DEVELOPMENT
Courses – 0, 1, 2, 3, 4 (development site)	News page
Video clips showing examples	Product page
Rules – with examples	Content creation / Social media channels
Resources	Website developer

**BENEFITS:**

- Aimed at supporting existing system and pathway
- Website hub – inc. courses and content
- Ready made content
- Current and up to date interpretations
- Consistent of message
- Latest rules and information
- Member nation keeps practical control up to and including Level 3
- Pathway / System support modular approach (as required)
- 20% rebate for the member nation





**BENEFITS:**

- Informs around the rules
- Educates players how to referee a match
  - Juniors
  - Club players
- Access to exclusive content – Refinars
- Tool for development – players, coaches, parents
- Provides examples of specific areas
- Squash TV discounts according to level of membership
- Video clips
  - Rule
  - Area of the court
  - Decision
  - Explanation
  - Difficulty

The screenshot displays the WSO Video Library interface. At the top, the navigation bar includes the WSO logo, HOME, VIDEO LIBRARY (highlighted), RULES, RESOURCES, ABOUT, and a LOGOUT button. Below the navigation bar, the user's profile is shown as LEE DREW, Level 3 Referee, with a level indicator '3'. The ADMIN Level 3 section shows a level indicator '4'. The LEARNING section shows Level 4 - 100%. The Country SPIN Federation and England Squash are also listed.

The main content area is titled 'Video Library'. On the left, there is a sidebar menu with options: Profile, Directory, Learning, Video Library (selected), and My Account. The main area features a filter section with dropdown menus for 'Yes Let', 'Back, Left', 'Decision Difficulty', 'Attribute', and 'Reference'. A 'CLEAR FILTERS' button is located below the filters. Below the filters, there are three video thumbnails, each with a play button icon. The first thumbnail is labeled 'Yes Let / Easy / Back, Left / Interference'. The second thumbnail is labeled 'Yes Let / Hard / Back, Left / Interference'. The third thumbnail is labeled 'Yes Let / Hard / Back, Left / Interference'.

## COURSES AND CONTENT FOR THE PLAYER, CLUB, JUNIOR, PARENT, COACH, VIEWERS:

- **Level 0** – Introduction to the game and for the complete beginner
- **Level 1** – More detailed and provides the basics
  - **Theory only** without practical
  - **Exam** at the end of the course
  - **Example videos** linked to scenarios
  - Calls to make as a **referee/marker**
  - How to **score** and **record the score**
  - **Rulings** and **timings** – for example injuries
  - Rule **flow charts**
  - 20% Squash TV discount

### 14. FALLEN OBJECT

The fallen object rule applies to anything that can interfere with the game. If a player drops their racket, they can pick it up and play on unless the ball has touched the racket or caused a distraction.

A let can be requested by:

- The striker who drops their racket because of interference
- The non-striker who drops their racket due to contact during the striker's effort to reach the ball

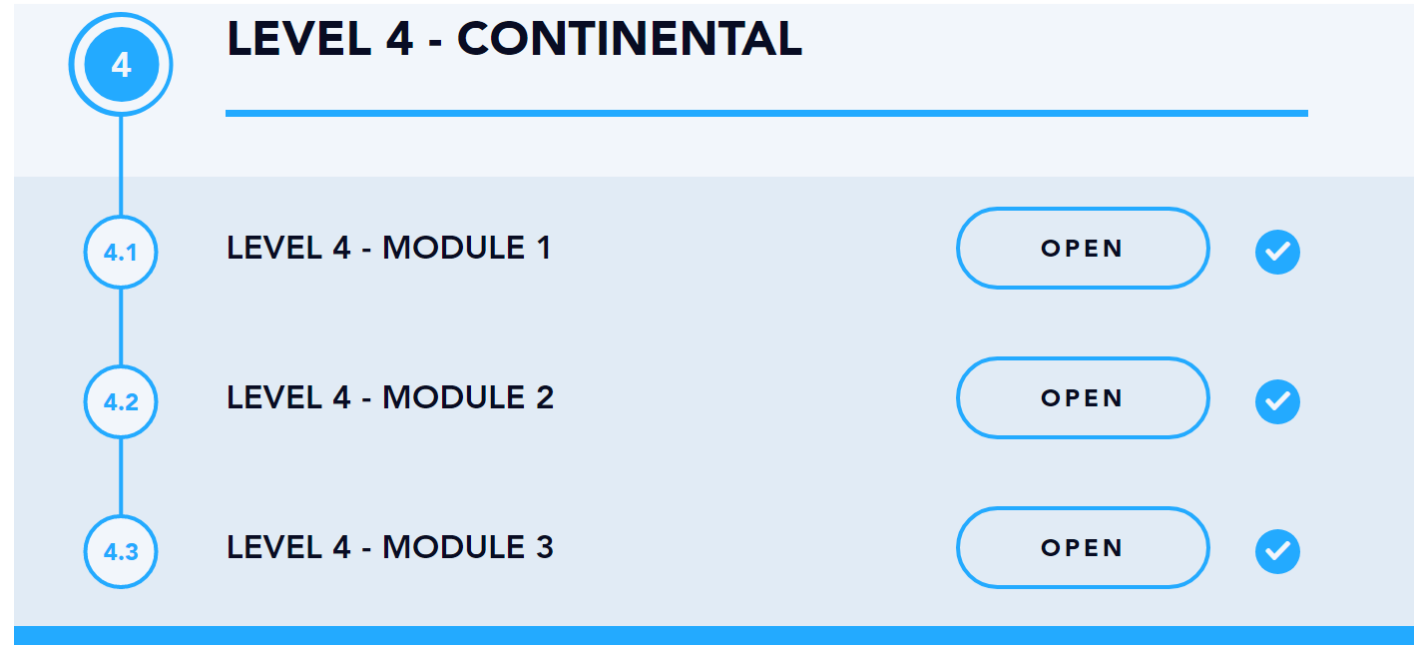
If any object other than a player's racket, falls to the floor during a rally, play must stop and the following rules apply:

- If the object fell from a player without any contact with the opponent, the opponent wins the rally
- If the object fell from a player because of contact with the opponent, a let is allowed, unless the striker has struck a winning return, or requests a let for interference, in which case the relevant section of rule 8 is applied
- If the object falls from a source other than a player, a let is allowed, unless the striker's winning return was interrupted, in which case the rally is awarded to the striker
- If the object was not seen until the rally ended and had no effect on the outcome of the rally, the result of the rally stands



## Overview

- **High Performance in an elite environment**
  - Knowing yourself, relating to others, decision-making process
  - Provides tools - coping, pressure
  - PDPs
  - Mentoring
- Appraisal based
- Review panel
- Recommended by Member Nations
- Testing phase / Soft Launch





## MODULAR AND TAILORED:

### Product description:

- Event management – PSA World Tour Level
- Online or Face to face
- Referees / Players / Coaches
- Groups or Individuals
- Appraisals
- Match assessments
- Courses / Workshops
- Movement / Decisions / Interpretations / Communication / Explanations

### Examples:

- Nigeria – 3 x Match Assessments, 3 day Face to Face course, 6 day event with appraisals
- WSF coaches course – Vienna, US Squash – Referee day
- Squash Australia – Appraisers, Singapore Squash – Match assessments



**PROMOTIONAL PLAN:**

- **Flyers** – General, Squash TV discounts, Refiners, Targeted
- **‘What’s Your Decision’ Series**
- **Meet the ref**
- **Q&A** with referees
- Regular **updates**
- **Decision clips** with polls
- **Video explainers** – situations
- Rule **clarity** updates – US Open video
- Event decision **stats**
- Key **referee milestones**
- View from the **hotseat**
- **Newsletter**
- **Behind the scenes** – as a MR and a VR



**NEXT STEPS:**

- **Partnerships** are **vital** to WSO
- We can make a **real difference** to the game
- WSO is **adaptable**
- Players will **improve** their game by **understanding** the rules better
- Coaches will be **informed** to develop their players in a way that meets the referee's / games expectations
- Spectators will become more **engaged** and will **understand** decision rationale better
- Together we can **inform** stakeholders
- Together we can **provide** tools that **improve** the individuals squash experience
- Always a lot of **expectancy** / **criticism** around officiating – important to **support** officials at every level



For more information, you can contact WSO at:

[info@worldsquashofficiating.com](mailto:info@worldsquashofficiating.com)

