



WSF CONFERENCE 2022

28 – 29 October

Grand Chola Hotel Chennai, India



- ◆ Our people and partners are fundamental to unlocking the sport's potential. We must nurture and support these relationships and recognize their contribution to the success of the sport



Subject: Outdoor court developments

WORLD
SQUASH

WSF

◆ **Summary:** As the evolution of various outdoor squash court design and settings gains impetus, this session explores how WSF and MNFs can best support these developments and benefit from the different initiatives under development

Aim: Understand how the outdoor courts can add value to the squash proposal of our MNFs and help our sport reach out to new audiences.

Goal: **Bring more people to SQUASH!**



Reason for promoting outdoor squash

The Future

- ◆ Widen the grass roots of the sport.
- ◆ Build up squash community in parks / clubs
- ◆ summer outdoor sport that can be enjoyed all year round
- ◆ Municipal external squash courts

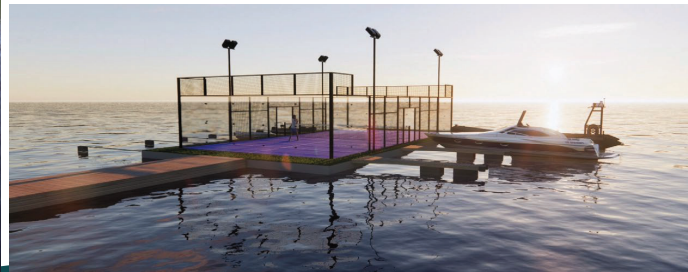
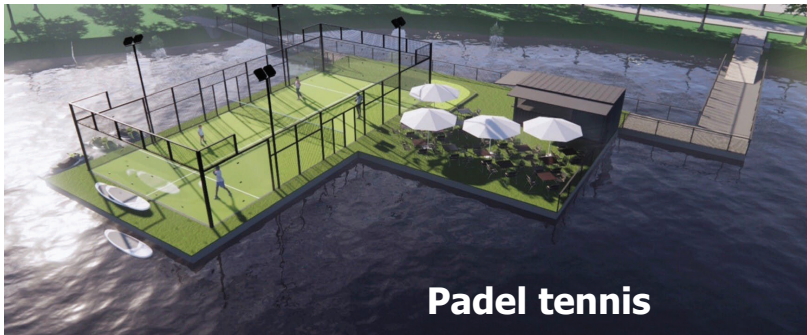


The Past

- ◆ Indoor winter sport played in a basement court with no natural light.
- ◆ Alternative to elite sports clubs.

New racket sports

- ◆ Padel tennis and Pickleball are currently enjoying a boom in many countries.
- ◆ 'new sports' not constrained by traditional perceptions of developers or players.
- ◆ These sports welcome innovation eg. floating padel courts.
- ◆ These external sports were permitted in the pandemic, when squash was not.
- ◆ These more gentle sports can sit alongside squash and although they are fun, they are *no replacement for the intensity of playing squash.*



Squash Innovation

- ◆ Squash Innovation can change perceptions of the sport.
- ◆ WSF can showcase new developments and partner with them.
- ◆ Inform National squash delegations of developments



Professional tournaments, beautiful locations

For many years Professional squash tournaments have been showcasing the possibilities of where a squash court can be located.



Antwerp Belgium
2002 Men's world Open Squash championship



Great Pyramid of Giza
1996 Al Ahram International



Chennai, India
2011 WSF Squash Federation's World Cup at Express avenue Mall

A pristine glass box located in the most Amazing spaces.



Chicago
2009 US Open on the Magnificent Mile



Hong Kong
2010 Hong Kong Open at the Plaza Hollywood Mall



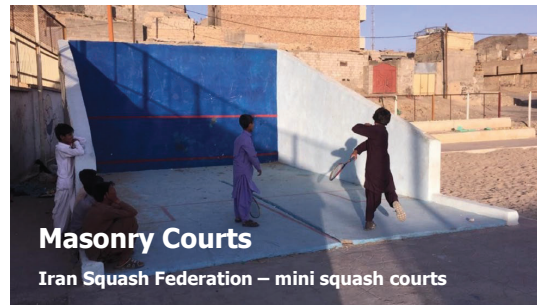
New York
1995 Grand Central Terminal

Professional Squash tournaments provides an opportunity to showcase beautiful locations around the globe.

External Court Materials



- ◆ Locally availability, budget and indigenous materials dictate construction techniques.
- ◆ Warm/Dry country courts - masonry construction and solid floor.
- ◆ Wet / cold country courts - draining water from floor. Rain canopy



Glass Courts



- Encourage Community feeling as game can be viewed from outside.
- Local climatic and seismic conditions may affect viability of glazed court solution.
- Utilises external views from within court.
- Minimal security required due to increased visibility.
- May be cost prohibitive.



Glass Courts
Hamilton Fish Park, New York City

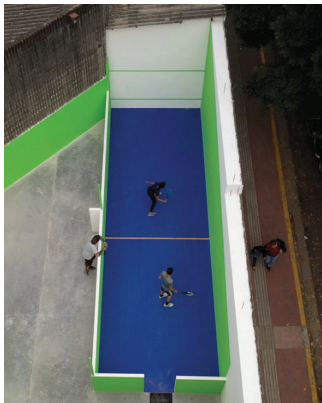


Permeable floor to facilitate water drainage



Masonry Courts

- ◆ More straightforward construction technique
- ◆ Easily maintained.
- ◆ Does not require imported materials or overseas expertise.
- ◆ Durable and cost effective design solution.
- ◆ Floor design may be more suitable for dryer countries.



Steel Courts

- ◆ Durable and robust design. Suitable for all climates.
- ◆ Sculptural steel courts, high end bespoke squash court design.
- ◆ Can be welcome addition to award winning Architectural greenspace or public area.

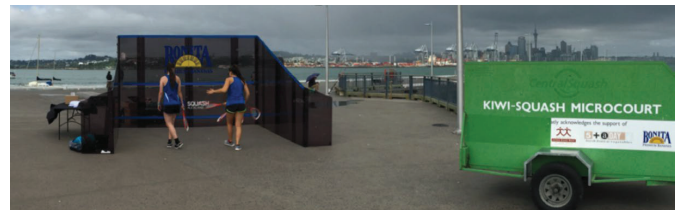


Creating Standards for External Courts



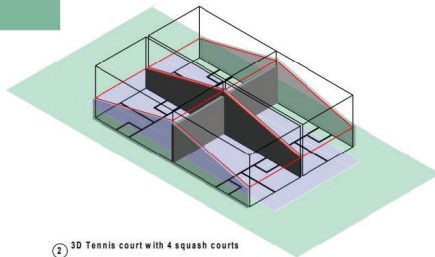
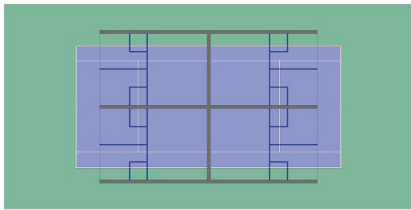
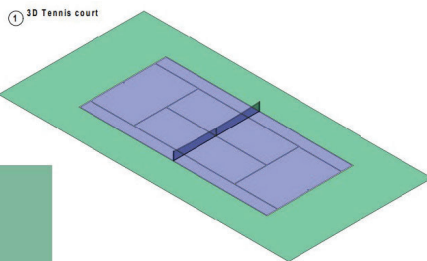
- ◆ What's the closest thing we have to industry approved standards for outdoor courts?
 - Where could this come from? Is this something for the committee to facilitate?
 - What might this process look like – ***WSF** input on current accreditation process and standards around traditional courts. Could WSF facilitate this process?
- ◆ Might we want to provide some surface level advice for on our website for individuals attempting a DIY project? Something that may not fit into the above.

Temporary Squash Courts



- ◆ Scaled down perspex courts. Great addition to Commonwealth Games 2022
- ◆ Inflatable courts – must be appropriately fixed to ground.
- ◆ Different balls may be suitable for use.
- ◆ Sustainability of temporary courts design should be considered.

Economy of scale



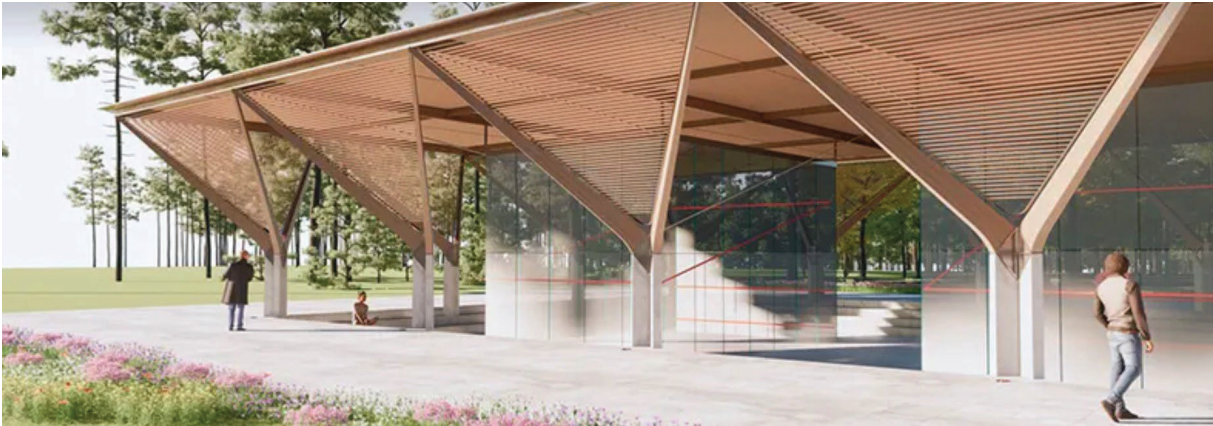
- ◆ **4 No. external squash courts could fit into the space for a single tennis court.**
- ◆ **This is potentially 4 times the revenue of a single tennis court.**
- ◆ **Can the product scale? For example, can a court fit into a shipping container? Or only for the domestic market? Is the design being sold separately without materials/shipping being required? Is there scope to mass produce and make a significant impact?**
- ◆ **What is the scope for tapping into the materials / manufacturers working in Padel for economies of scale?**

**WORLD
SQUASH**

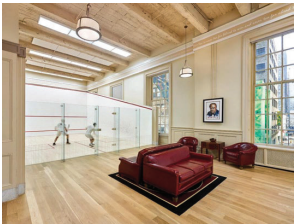
WSF

Vision of the future – Architectural Innovation

- ◆ **WSF currently encouraging Architectural Innovation.**
- ◆ **IOC IPC IAKS Architecture Prize for students and young professionals.**
- ◆ **Inspire the next generation of architects and developers**



Internal Architectural Innovation



◆ Examples of one off innovation in squash courts installed in private homes



ASB Outdoor Courts

Challenges:

- ◆ Visibility of the sport
- ◆ Access to courts
- ◆ Winter sport
- ◆ Competition from other sports / school / extracurricular activities
- ◆ Coolness factor
- ◆ Lack of local heroes that inspire kids to play
- ◆ Lack of coaches, courts

ASB Outdoor Courts

Immediate solutions:

- ◆ Increase visibility of the sport
 - ◆ Make it an all-year round sport
 - ◆ Offer more court time for juniors
- ➔ In addition to existing centers, install **outdoor squash courts** in public places that can be used all year round



ASB Outdoor Courts

ASB had identified this need already back in 2015 and presented a solution at the WSF AGM in Philadelphia:

ASB CommunitySquashCourt for urban parks

ASB Outdoor Courts

ASB Community Squash Court



[More information](#)

ASB Outdoor Courts

ASB TPoint: The complete SQUASH COURT solution including building

- ◆ Modular system
- ◆ Climate controlled
- ◆ No need to build any building or shell for the SQUASH COURTS
- ◆ High end solution

ASB Outdoor Courts





ASB Outdoor Courts

2022:
Another innovative solution

ASB Outdoor Courts

Requirements:

- ◆ Safe solution
- ◆ Public space
- ◆ Durable, sustainable material, solid
- ◆ SQUASH playing characteristics ensured
- ◆ Ideally with proper lighting
- ◆ Availability from high-end to budget versions for each client's requirements



ASB Outdoor Courts

2022:

The ASB Outdoor Squash Court

ASB Outdoor Courts



ASB Outdoor Courts



ASB Outdoor Courts



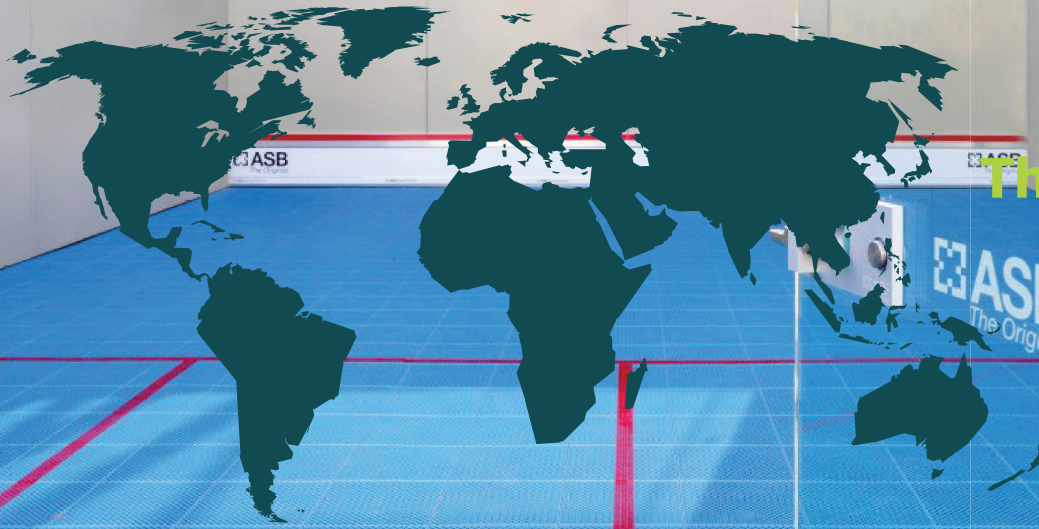
ASB Outdoor Courts

Quick facts:

- ◆ only concrete base plate required 9 m x 11.5 m, 15 cm thickness
- ◆ 1 week court installation time
- ◆ suitable for all weather conditions
- ◆ approved by structural engineer
- ◆ squash walls that ensure even and consistent rebound
- ◆ optional with lighting and / or roof

ASB Outdoor Courts

a solution for all continents

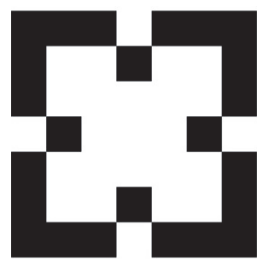


Thank you

ASB
The Original

ASB Outdoor Courts

www.asbsquash.com



ASB
The Original



THANK YOU